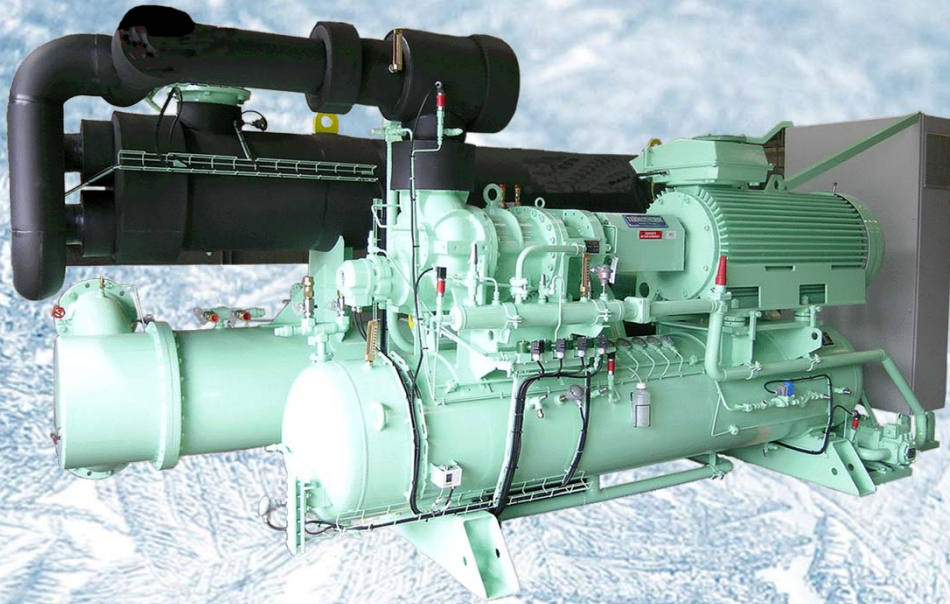





TEKNOTHERM

MARINE

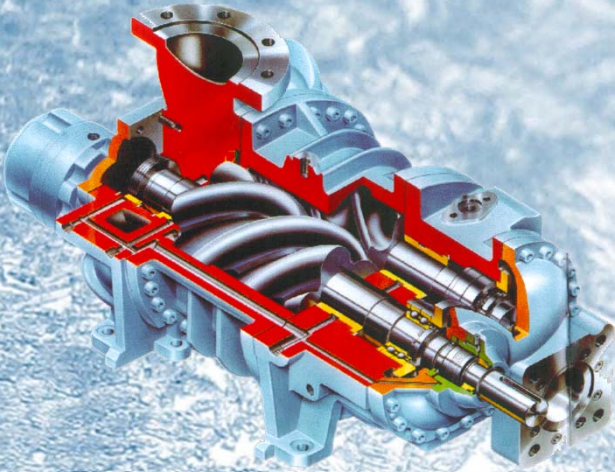


MWC - Marine Water Chillers Open drive compressor

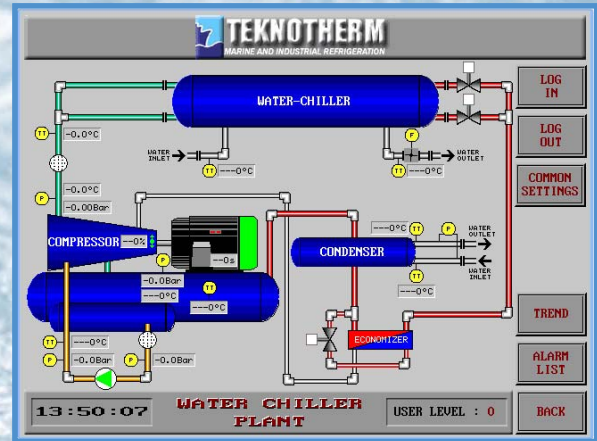
MWC - Marine Water Chillers are specially designed HVAC-chillers for Passenger Ferries, small Cruise Ships, RoPax and RoRo vessels.

- ◆ Wide capacity range from 500 kW to 3000 kW
- ◆ Factory assembled packages including all internal piping and electric cabling
- ◆ Open drive screw compressor with forced lubrication
- ◆ Standard or high voltage electric drive motor
- ◆ Dry expansion shell & tube evaporator
- ◆ Fresh- or seawatercooled shell & tube condenser
- ◆ Low refrigerant charge
- ◆ Refrigerant R-407c or R-404a (R-134a as option)
- ◆ Motorstarter of direct, star-delta or soft-start type
- ◆  **TEKNO-TRONIC**® touch-screen monitoring and control
- ◆ Custom-built to meet all major classification societies

MWC - Marine Water Chillers - standard features



Screwcompressor with male drive,
sleeve bearings and balance piston



TEKNO-TRONIC® touch-screen
operating- and monitoring system



Rear view of MWC-chiller

**Consult Teknotherm for full
specification for your project.**

We reserve the rights to change specification without notice.

Rev. 01/2012

Head office - Halden
P.O. Box 87, N-1751 Halden, Norway
Phone: +47 69 19 09 00 - Fax: +47 69 19 09 01
www.teknotherm.com

