

Marine Water Chiller

Twin unit



**Marine Water Chiller is specially designed HVAC-chillers
for all kind of merchant ships.
The unit is designed for future environmental expectations.**

- Wide capacity range from 180 kW to 1376 kW
- Twin- and single compressor arrangement
- Compact type screw compressor with capacity regulation
- Dry expansion shell & tube evaporator
- Fresh- or seawater cooled shell & tube condenser
- Factory assembled packages including internal piping and electric cabling
- Low refrigerant charge
- Refrigerant R-134a
- Motorstarter of direct- or star-delta type
- Meet environmental class requirement
- Options for 690V



Heating



Ventilation

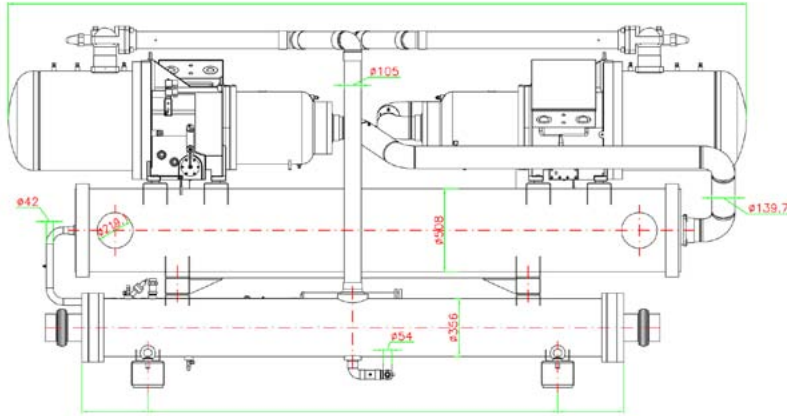


Air Conditioning



Refrigeration

Twin compressor



Twin compressor models

Model	Nr. Compr.	UNIT CAPACITY	Overall dimension (mm)		
		kW	Length	Height	Width
MWC-C-520-T-E	2	520	4150	1620	1600
MWC-C-660-T-E	2	660	4150	1620	1600
MWC-C-760-T-E	2	760	4150	1715	1600
MWC-C-800-T-E	2	880	4170	1860	1600
MWC-C-1010-T-E	2	1010	4170	1860	1600
MWC-C-1140-T-E	2	1140	4480	1860	1600
MWC-C-1280-T-E	2	1280	4480	1860	1630
MWC-C-1370-T-E	2	1370	4560	2260	1700

Dimensions if for guidelines only.

Design data : 3 x 440V-60Hz

The capacity is based at FW 38°C and chilled water 6-12°C