

VF - Strainer



Type VF

For seawater and brackish water.

The strainer designed for self cleaning by reversing water flow.

Shell

Made of 6 mm rolled steelplate. Topcover of 12 mm steelplate, flanged to the shell with o-ring tightning.

Water connections with flanges.

Strainer

Made of 1,5 mm perforated stainless steelplate with a 10 mm perforation.

Water circulation

Inlet at center of strainer. The water forcing itself through perforation, leaving dirt, fishscales etc. in scuter.



Heating



Ventilation

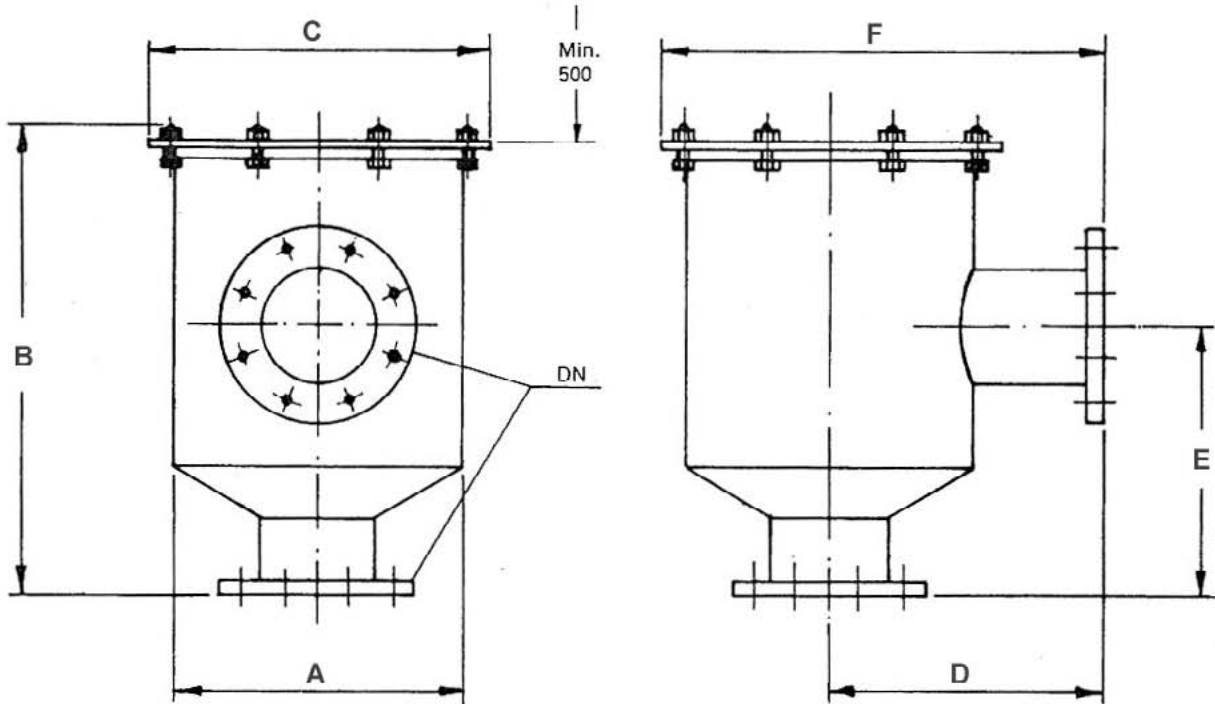


Air Conditioning

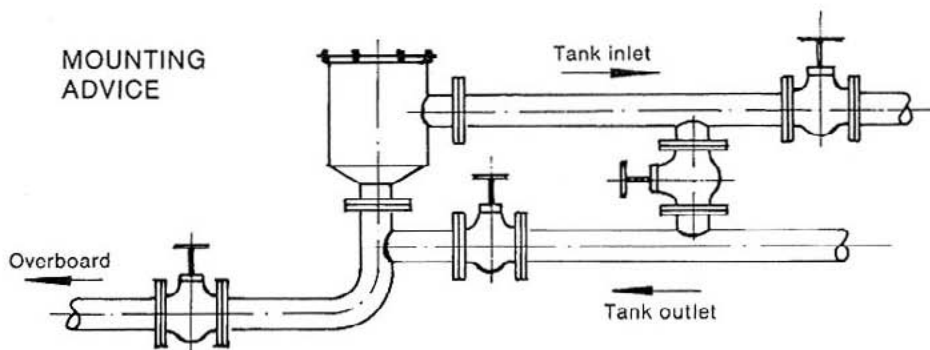


Refrigeration

VF - Strainer



MOUNTING
ADVICE



Strainer type	DN Flange NS 2527 PN 16 DIN 2501	No. of bolts	Bolt size	Waterflow m ³ /h at rate 2 m/sec.	Dimensions in mm						Weight kg
					A	B	C	D	E	F	
VF 100	DN 100	8	M 16	57	420	665	500	350	400	600	95
VF 125	DN 125	8	M 16	84							100
VF 150	DN 150	8	M 20	126							105
VF 200	DN 200	12	M 20	250							110
VF 200	DN 250	12	M 24	400	570	945	660	455	550	785	120
VF 250	DN 250	12	M 24	400							155
VF 250	DN 300	12	M 24	550							165