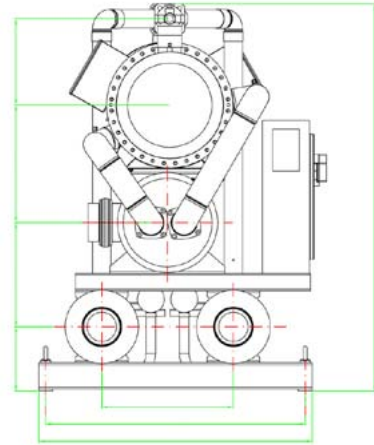
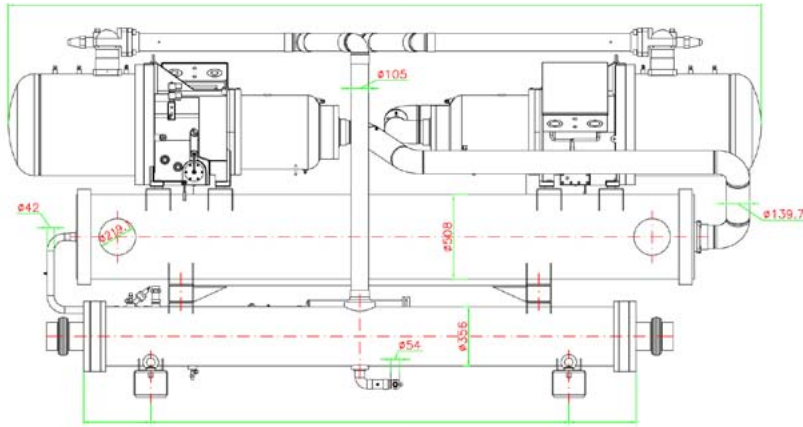


Refrigerant Transfer Unit



- Dimensioned to hold refrigerant charge of one Marine Water Chiller-unit
- Reduces refrigerant loss and emission during maintenance
- Suitable for all CFC and HCFC refrigerants
- Service valves built-on unit
- Semihermetic compressor with oil separator
- Shell & tube condenser, sea- or freshwater cooled
- Electric start- and control panel built-on unit

Twin compressor



Twin compressor models

Model	Nr. Compr.	UNIT CAPACITY	Overall dimension (mm)		
		kW	Length	Height	Width
MWC-C-520-T-E	2	520	4150	1620	1600
MWC-C-660-T-E	2	660	4150	1620	1600
MWC-C-760-T-E	2	760	4150	1715	1600
MWC-C-800-T-E	2	880	4170	1860	1600
MWC-C-1010-T-E	2	1010	4170	1860	1600
MWC-C-1140-T-E	2	1140	4480	1860	1600
MWC-C-1280-T-E	2	1280	4480	1860	1630
MWC-C-1370-T-E	2	1370	4560	2260	1700

Dimensions if for guidelines only.

Design data : 3 x 440V-60Hz

The capacity is based at FW 38°C and chilled water 6-12°C