

DESCRIPTION

This unit is specially designed for use in high velocity air condition systems to supply the specified amount of air in the rooms. It ensures optimum distribution of the air in the room and controls the room temperature. The unit consists of an internally insulated box. This has an inlet opening equipped with a throttling device for setting of design airflow. Inside the unit an electric heater with overheat protection is installed. Junction box is mounted at the air inlet end, and a switch for presetting heater effect is installed inside the unit. The outlet opening through the ceiling is equipped with a supply diffuser. The designed airflow supplied through the unit is set by adjusting the opening of the throttling device within the unit. The temperature within the room is regulated automatically by the reheater controlled by a room thermostat.

TECHNICAL SPECIFICATION & DIMENSIONS

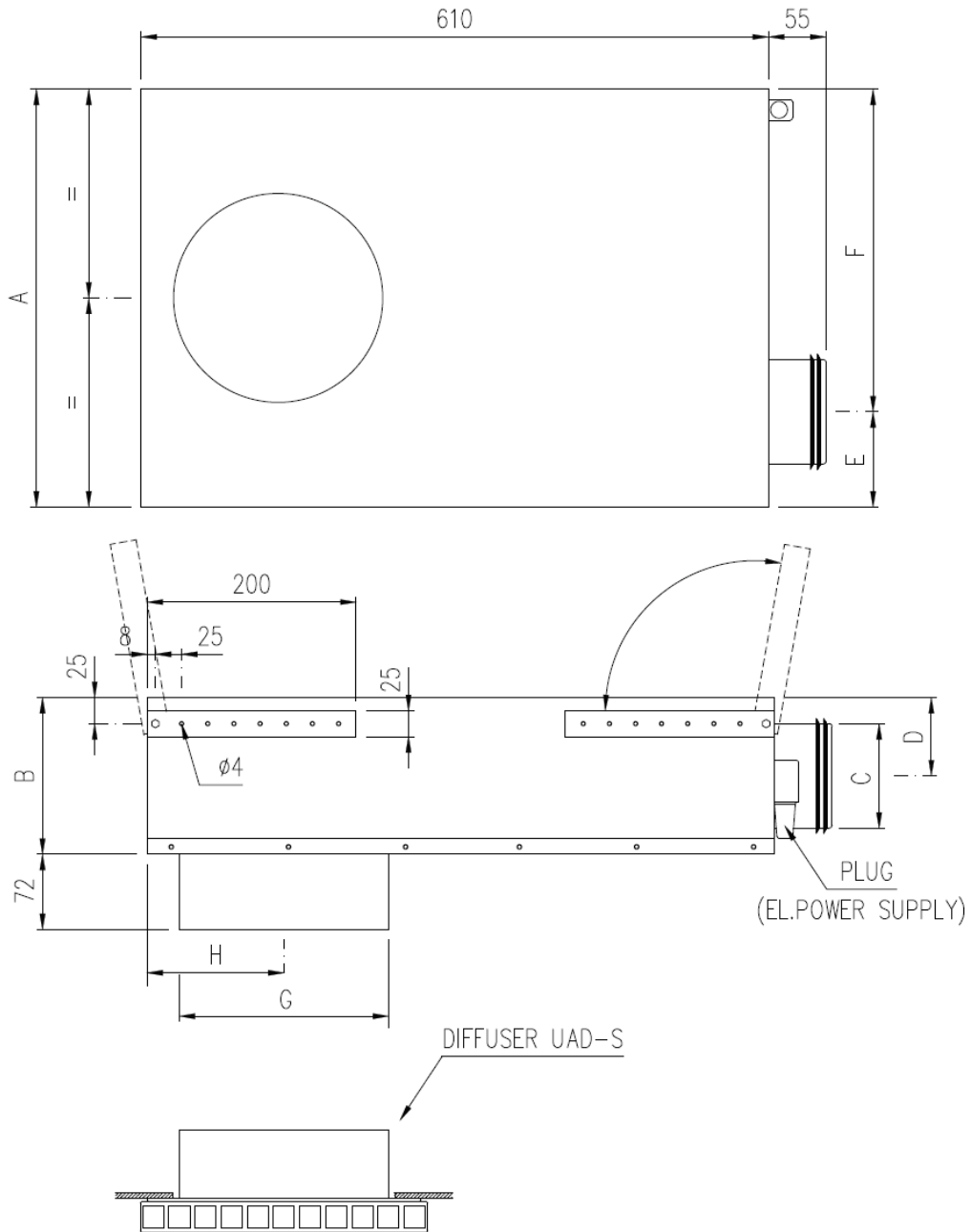
- material casing: galvanized sheet steel
- material throttling device: galvanized sheet steel
- material insulation: mineral wool
- material diffuser: steel sheet, white epoxy

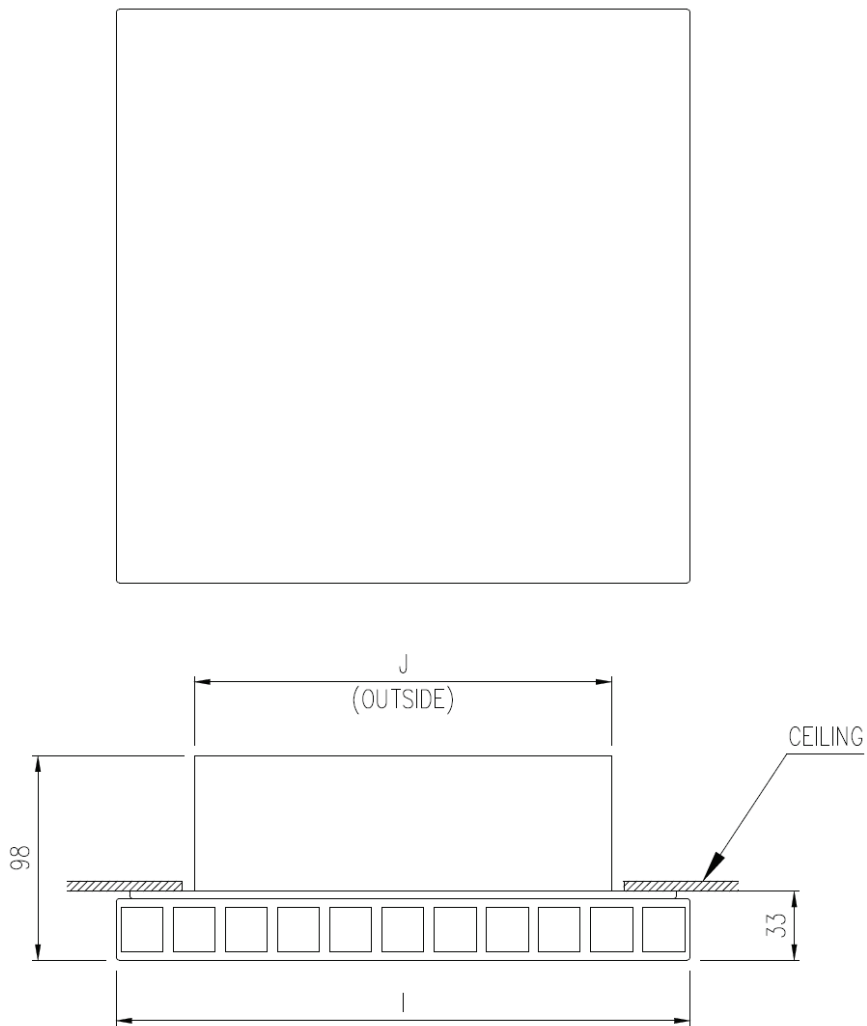
Hz	63	125	250	500	1k	2k	4k	8k
ΔL	22	18	14	22	24	26	28	29
k	-	7	7	2	-3	-7	-11	-10

Sound attenuation, ΔL including end reflection.

Sound power level: $L_w = L_A + k$

Type	Flow range [m ³ /h]	Dimensions [mm]								Weight [kg]	Heating capacity available [W]
		A	B	ØC	D	E	F	ØG	H		
UAT-1.0CE	50 – 200	400	150	98.8±0.5	75	91	309	201	131	11.8	250/500/1000
UAT-1.1CE	150 – 350	425	175	123.8±0.5	88	104	321	201	131	13.3	250/500/1000
UAT-1.2CE	250 – 500	450	200	158.8±0.5	100	116	334	251	156	14.0	375/750/1500

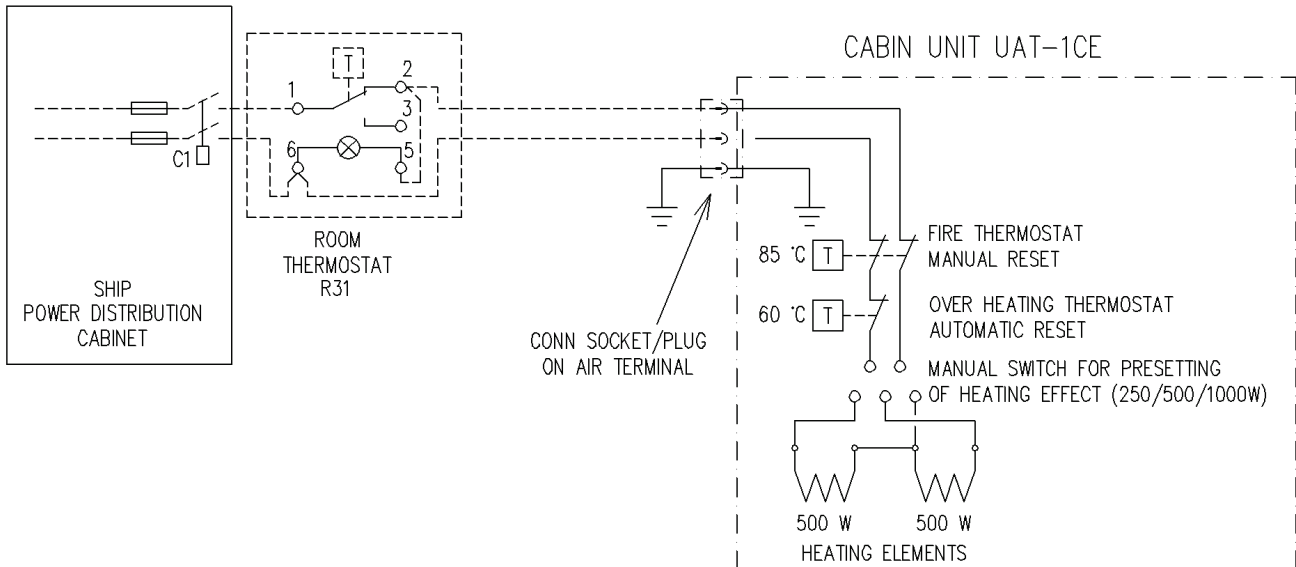


Diffuser UAD-S for cabin unit UAT 1CE


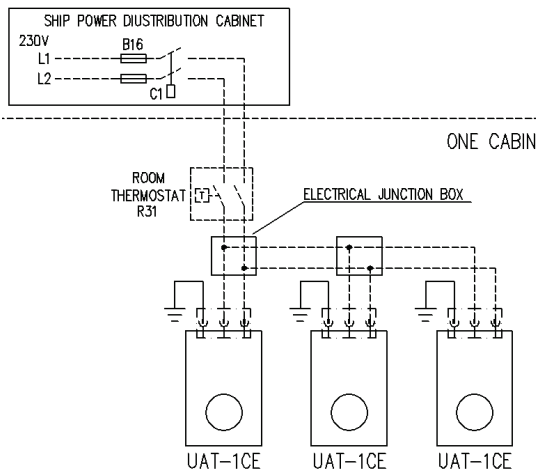
Cabin unit type	UAD-S Dimensions	
	I	ØJ
UAT-1.0CE	275	199
UAT-1.1CE	275	199
UAT-1.2CE	325	249

WIRING DIAGRAMS

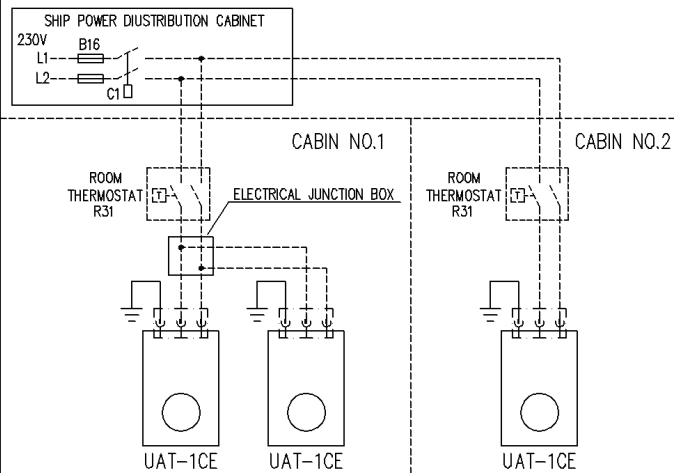
UAT 1.0CE and UAT 1.1CE – thermostat R31



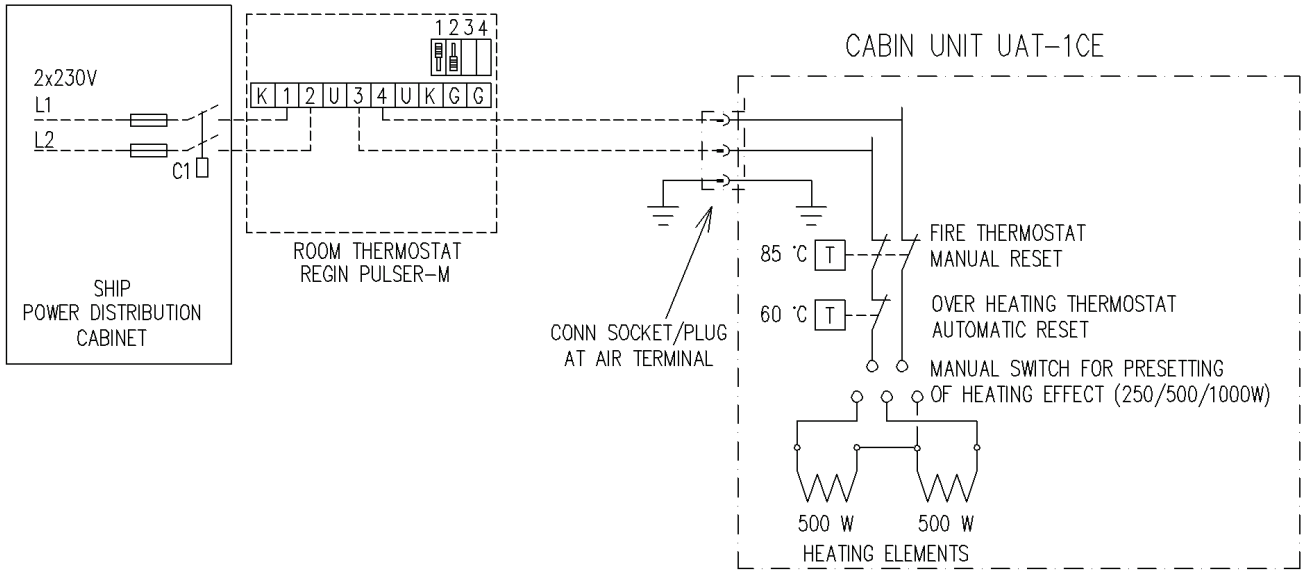
EXAMPLE 1:
3 PCS OF CABIN UNITS UAT-1CE INSTALLED IN ONE CABIN
CONNECTED TO ONE WALL THERMOSTAT (max thermostat load 16A)



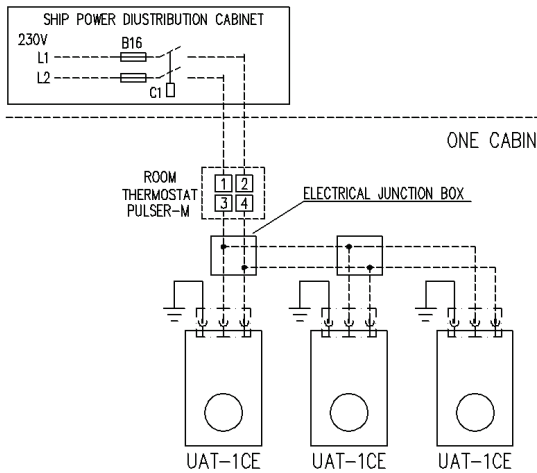
EXAMPLE 2:
3 PCS OF CABIN UNITS UAT-1CE INSTALLED IN TWO DIFFERENT CABINS



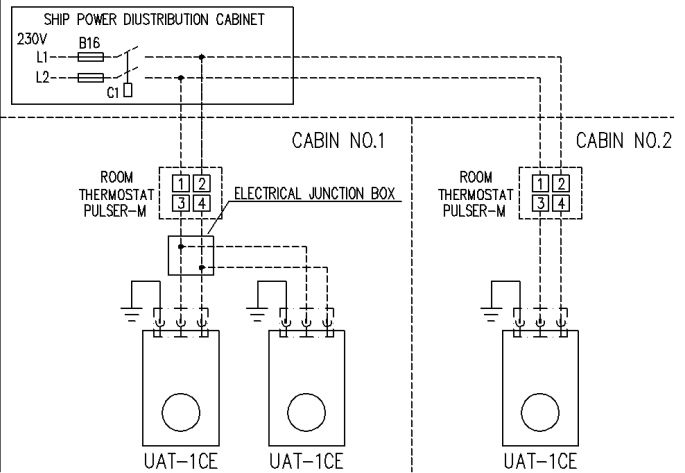
UAT 1.0CE and UAT 1.1CE – thermostat PULSER-M



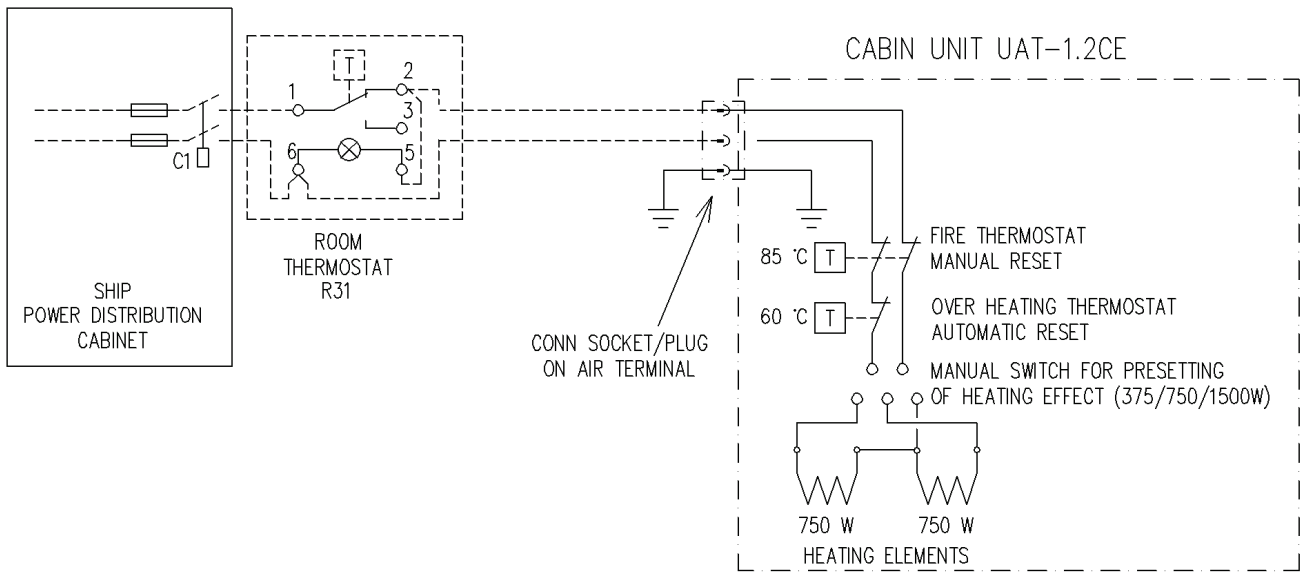
EXAMPLE 1:
3 PCS OF CABIN UNITS UAT-1CE INSTALLED IN ONE CABIN
CONNECTED TO ONE WALL THERMOSTAT (max thermostat load 16A)



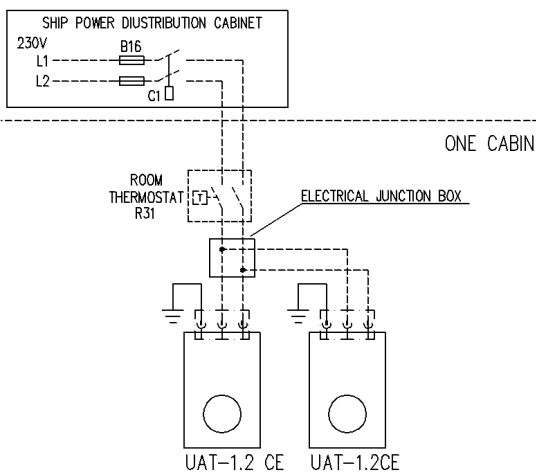
EXAMPLE 2:
3 PCS OF CABIN UNITS UAT-1CE INSTALLED IN TWO DIFFERENT CABINS



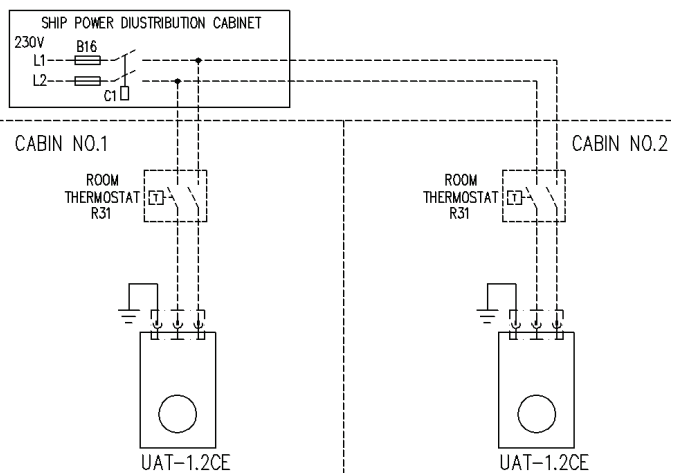
UAT 1.2CE – thermostat R31



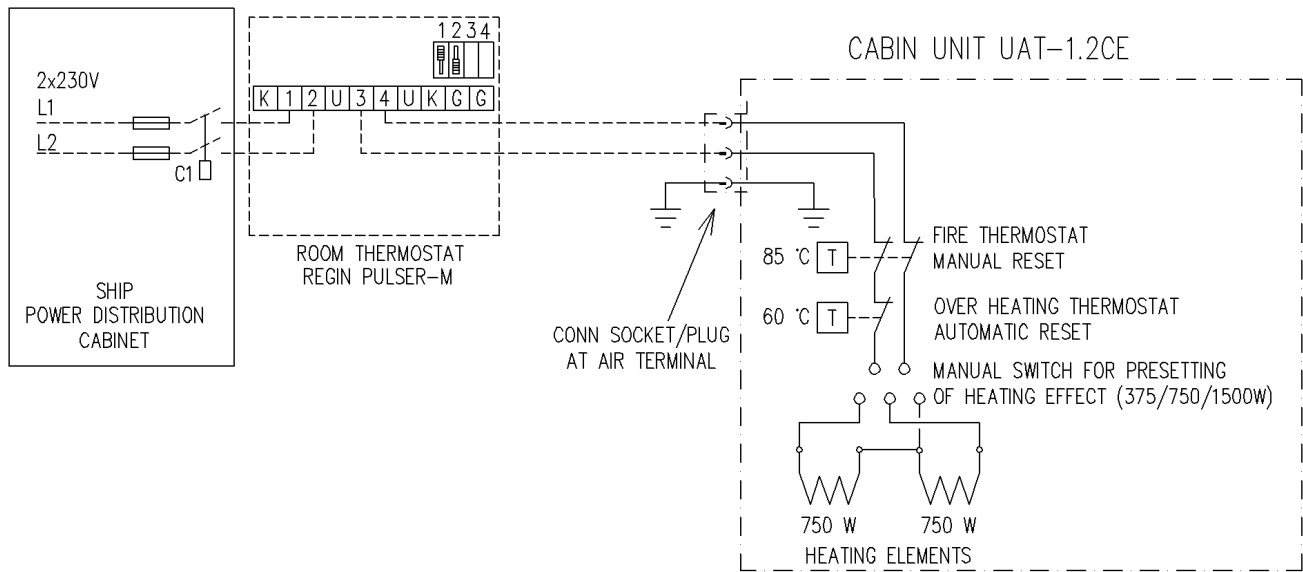
EXAMPLE 1:
2 PCS OF CABIN UNITS UAT-1.2CE INSTALLED IN ONE CABIN
CONNECTED TO ONE WALL THERMOSTAT (max thermostat load 16A)



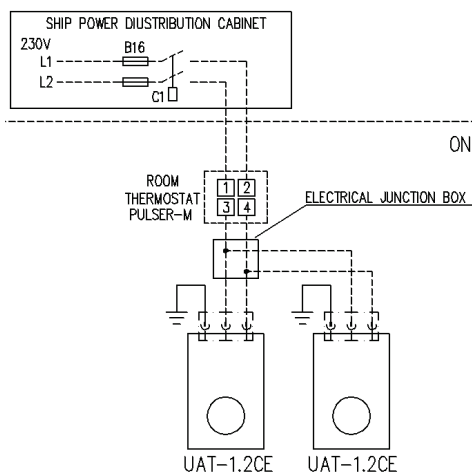
EXAMPLE 2:
2 PCS OF CABIN UNITS UAT-1.2CE INSTALLED IN TWO DIFFERENT CABINS



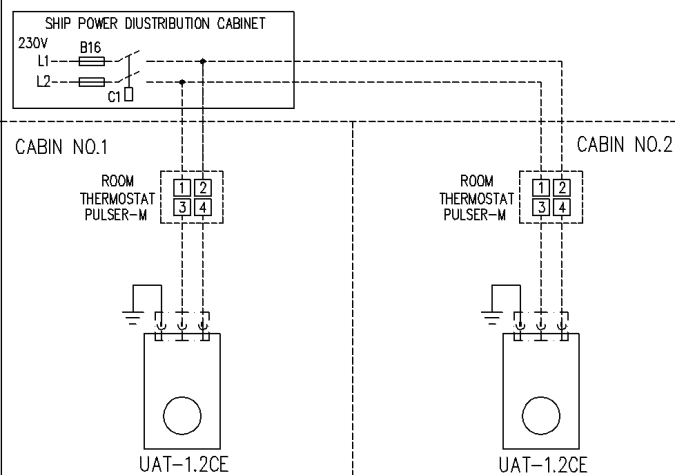
UAT 1.2CE – thermostat PULSER-M



EXAMPLE 1:
2 PCS OF CABIN UNITS UAT-1.2CE INSTALLED IN ONE CABIN
CONNECTED TO ONE WALL THERMOSTAT (max thermostat load 16A)



EXAMPLE 2:
2 PCS OF CABIN UNITS UAT-1.2CE INSTALLED IN TWO DIFFERENT CABINS



Interlock with supply air fan