

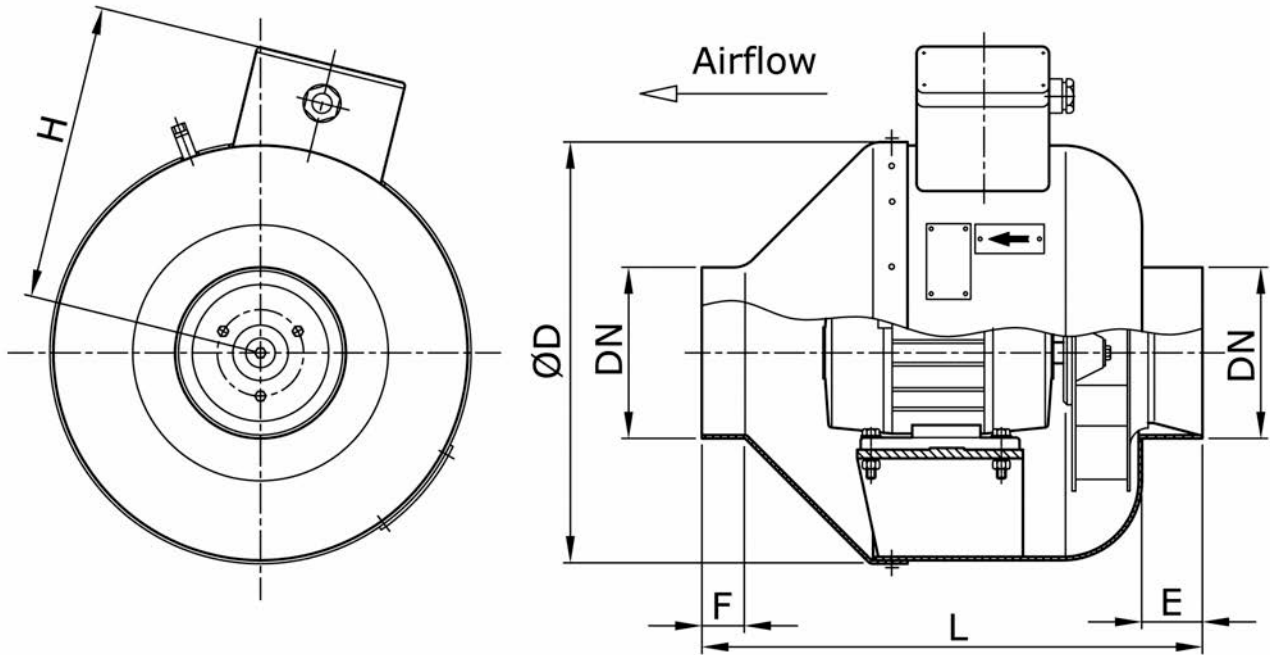
**DESCRIPTION**

Marine duct fans WMR type are destined for operation in ventilation systems of seagoing of unrestricted cruising area as well as offshore objects. Temperature of conveyed medium must not exceed +45°C, dust contents 0,3g/m<sup>3</sup>. Casing and impeller of WMR fans are made of PA2 aluminum sheets, welded. On the casing a terminal box with G20 cable gland, for feeding cable connection, is fitted. Electric motor: induction, squirrel-type, one-phase, of IP55 enclosure, in marine execution.

**TECHNICAL SPECIFICATION & DIMENSIONS**

Type		WMR100/L	WMR125/L	WMR160/L	WMR200/M	WMR200K	WMR200/L
DN		100	125	160	200	200	200
Power consumption [kW]		0.05	0.07	0.13	0.21	0.32	0.40
Electric motor	Revolutions [1/min]	2860	2860	2820	2850	2850	2800
	Supply [V/Hz]	1x220/50	1x220/50	1x220/50	1x220/50	1x220/50	1x220/50
Weight [kg]		4.4	5.0	7.8	9.3	11.8	14.0
Max. noise level [dB(A)]		66	71	74	76	76	78
Power consumption [kW]		0.07	0.10	0.21	0.28	0.39	0.59
Electric motor	Revolutions [1/min]	3430	3430	3380	3400	3400	3360
	Supply [V/Hz]	1x220/60	1x220/60	1x220/60	1x220/60	1x220/60	1x220/60
Weight [kg]		4.4	5.0	7.8	9.6	11,8	14.0
Max. noise level [dB(A)]		69	74	77	79	80	81

Fran type	Dimensions [mm]					
	DN	ØD	L	H	E	F
100/L	100	244	290	175	35	25
125/L	125	264	315	185	35	25
160/L	160	338	340	225	35	25
200/M	200	338	400	225	40	30
200/K	200	378	400	250	40	30
200/L	200	418	400	266	40	30



**PERFORMANCE CHART**
