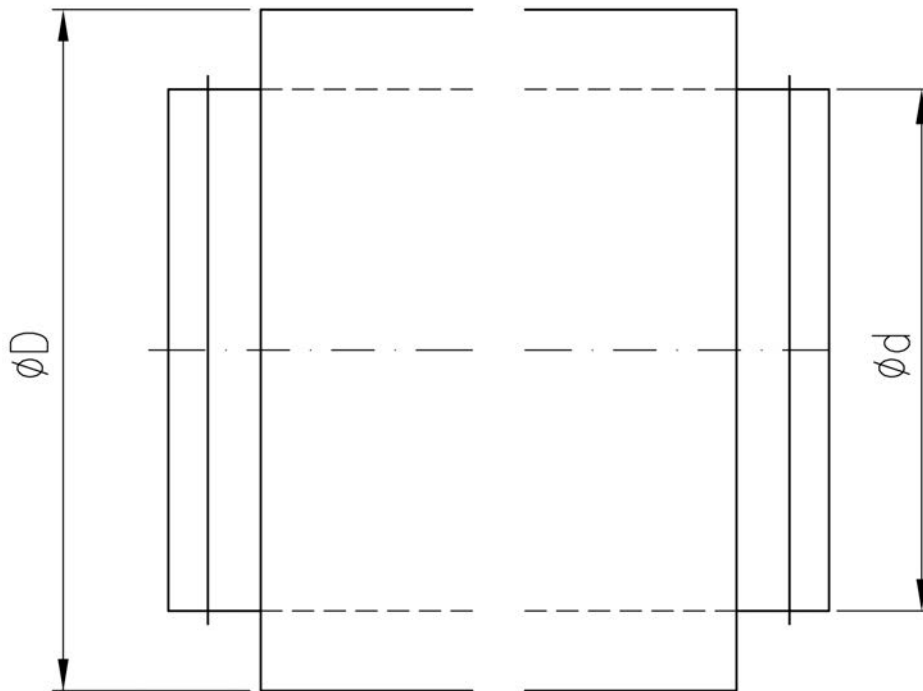


**DESCRIPTION**

The ESLI type fitting cap is executed for duct termination. It is insulated with mineral wool.

**DIMENSIONS**


Dimensions [mm]		Weight [kg]
$\varnothing d$	$\varnothing D$	
80	112	0.2
100	132	0.2
125	157	0.3
160	192	0.5
200	232	0.8
250	280	1.1